



January 2018 Newsletter

(563) 382-4158 ~ parkrec@decorahia.org ~ <http://parks.decorahia.org>

In 2017, it was determined the Emerald Ash Borer (EAB) had fully infested Decorah.



EAB is a wood-boring beetle from Asia that kills ash trees. Work began immediately to get ahead of it, and a plan was established to remove and replace stricken trees.

Decorah's EAB Forestry Plan

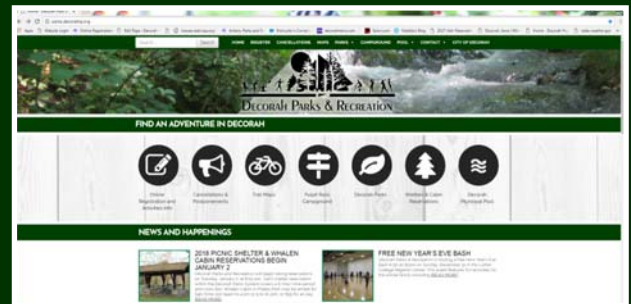
Identify, remove, and continually monitor all ash trees on the public right of way (ROW) and cultivated park areas

- 2016-17 Tree Survey indicated 450 ROW ash trees and an additional 110 in cultivated park areas
- Approximately 35 ash trees were removed from city parks
- 65 ash trees were removed from ROW
- 130 new trees have been planted in ROW and city parks
- Began EAB educational outreach to the community



The Decorah Lions Club established a Tree Bank Fund and raised \$2,200 at their first event, Pancakes for Parks.

The next fundraiser and fun family event is the Great Inflate & Pancake Breakfast on February 24.



Our new Park-Rec. Website was launched. Go to <http://parks.decorahia.org> for links to online recreation registration, parks, campground, and pool information, trail maps, news updates, cancellations, and more!



A new Ski Groomer was purchased in time for the 2018 Winter Season.

New cross-country ski maps were printed in 2017 and are available online, in the Park-Rec Office, and at trail kiosks.

Like us on Facebook

Follow us on Twitter @DecorahParkRec

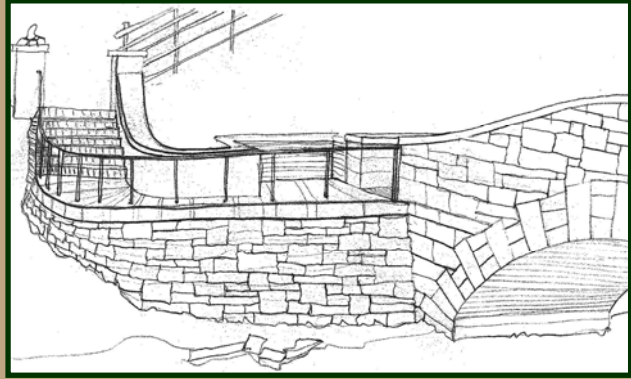
2017 Noteworthy Happenings

The first proceeds from the Endowment Fund were used towards the Stone Arch Bridge Project.

A second portion of the Phelps Park rock wall along Park Street was replaced. Work will continue over the next few summers as time and funding allow.

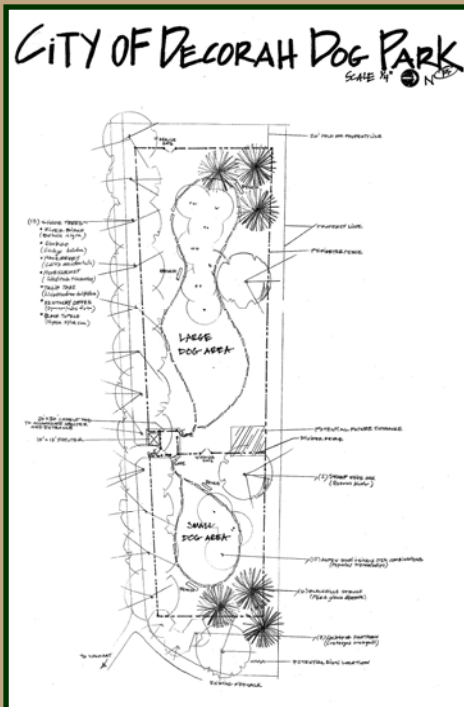
Utility crews hooked up Pulpit Rock Campground to the Metronet. Staff hope to have better WiFi service distributed to the campground by the 2018 season.

A Viking Ship themed toddler waterslide was selected and will be installed in time for the 2018 pool season.



The Stone Arch Bridge in Dunning's Spring Park was completed in Spring 2017.

Phase 2 begins in Summer 2018 and includes adding a rock walkway leading away from the bridge and replacing the first flight of steps across the creek.



↑ Walmart ↑

← Old Stage Road →

A committee of dedicated volunteers spearheaded a Dog Park Fundraiser and met their initial goal of \$30,000. Seeding, fencing and signage will be completed next summer on the 2-acre plot of land behind the Decorah Walmart. Additional donations are needed to add a shelter and other amenities. A public forum for dog park users is scheduled for March 22nd. More info TBA at a later date.



Reconstruction of Dug Road began 15 months after the trail slid off the hillside following heavy rainfall during the 2016 flood.

Due to Winneshiek County's Presidential Disaster Declaration, FEMA provided technical assistance in the reconstruction design and is also funding 85% of the construction costs.